



FAITH FARMING

An In-Depth Guide For Virtual Land & Cloud Farming, Trading, Land Tenure & Seed Farming.

Cloud Farming
www.faithfarming.com

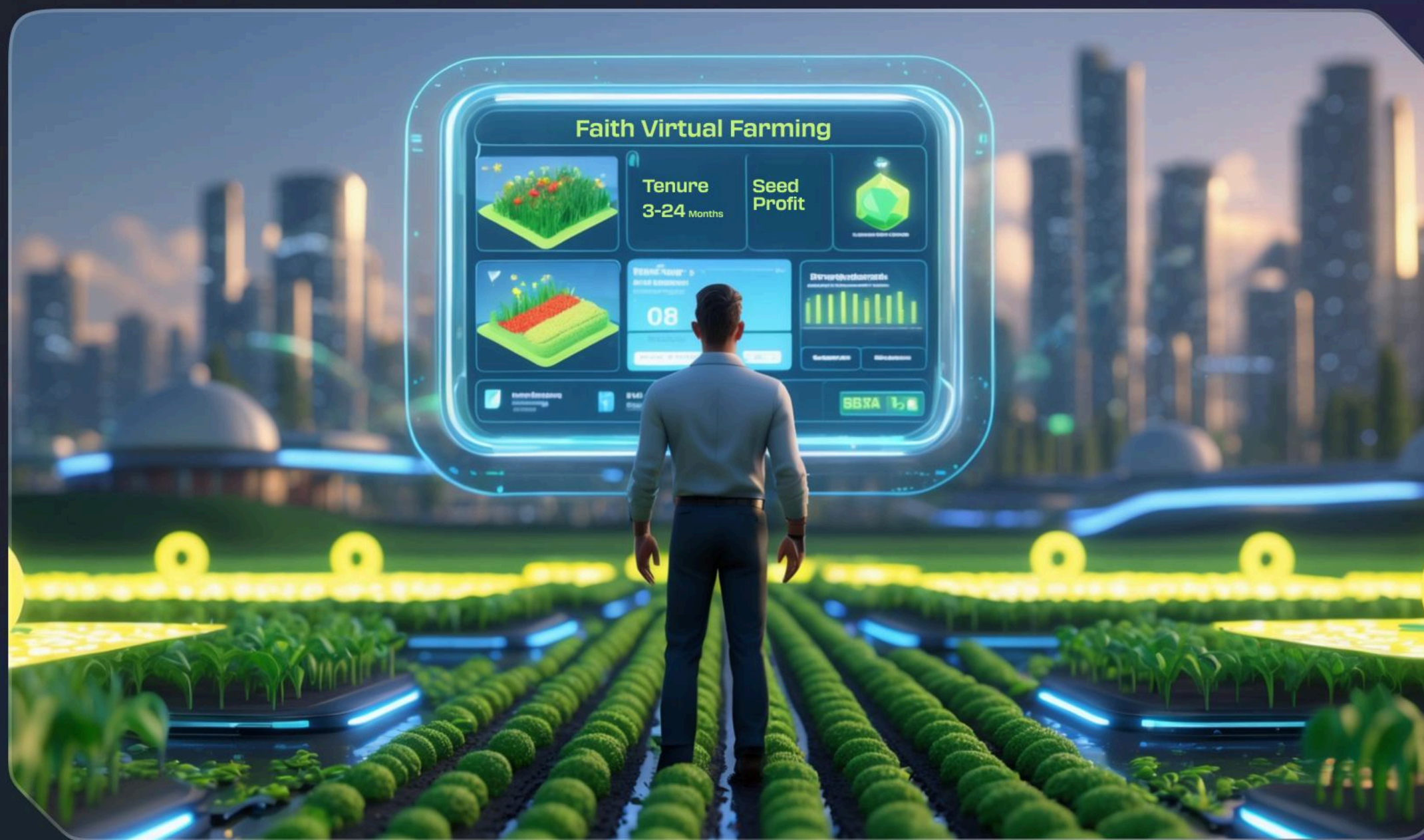
Token Pre-Sale
www.faithprotocol.io

Eco-System
www.faithprotocol.com

Metaverse
www.faithmeta.land

What Is Faith Virtual Land

Faith Virtual Land Is A New Revolutionary Invention In The Metaverse. Virtual Land Is A Digital Property Within A Metaverse Or Blockchain-Based Platform. It Exists As A Blockchain-Based Virtual Asset And Can Be Bought, Sold, Or Developed For Various Purposes, Such As Gaming, Business, Cloud Farming, Or Social Interactions. Owners Can Build, Trade, Land Tenure & Seed Farming, Or Monetize Their Land, Creating Real-World Value In A Digital Ecosystem.



Digital Ownership

Virtual Land Is Secured By Blockchain, Ensuring Transparent And Verified Ownership.



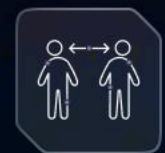
Monetization Potential

Owners Can Trade, Develop, Or Earn Through Various Platform-Driven Opportunities.

What Is Faith Farming

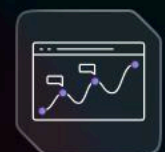
Faith Farming Is A Decentralised, Blockchain-Based Ecosystem That Allows Users To Buy, Sell, Trade, Farm, Lease, Seed, Assets, NFT & ANFT Use, And Trade Virtual Land Parcels. The Goal Is To Participate In The Growth Of A Virtual Economy Where Land Ownership, Farming, And Asset Creation Are Key Components.

Key Concepts:



Virtual Land Ownership

Buy, Sell, Lease, Seed, & Trade In Parcels.



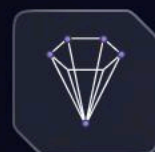
Asset Creation & Trading

Create Valuable Assets That Can Be Traded Within The Ecosystem.



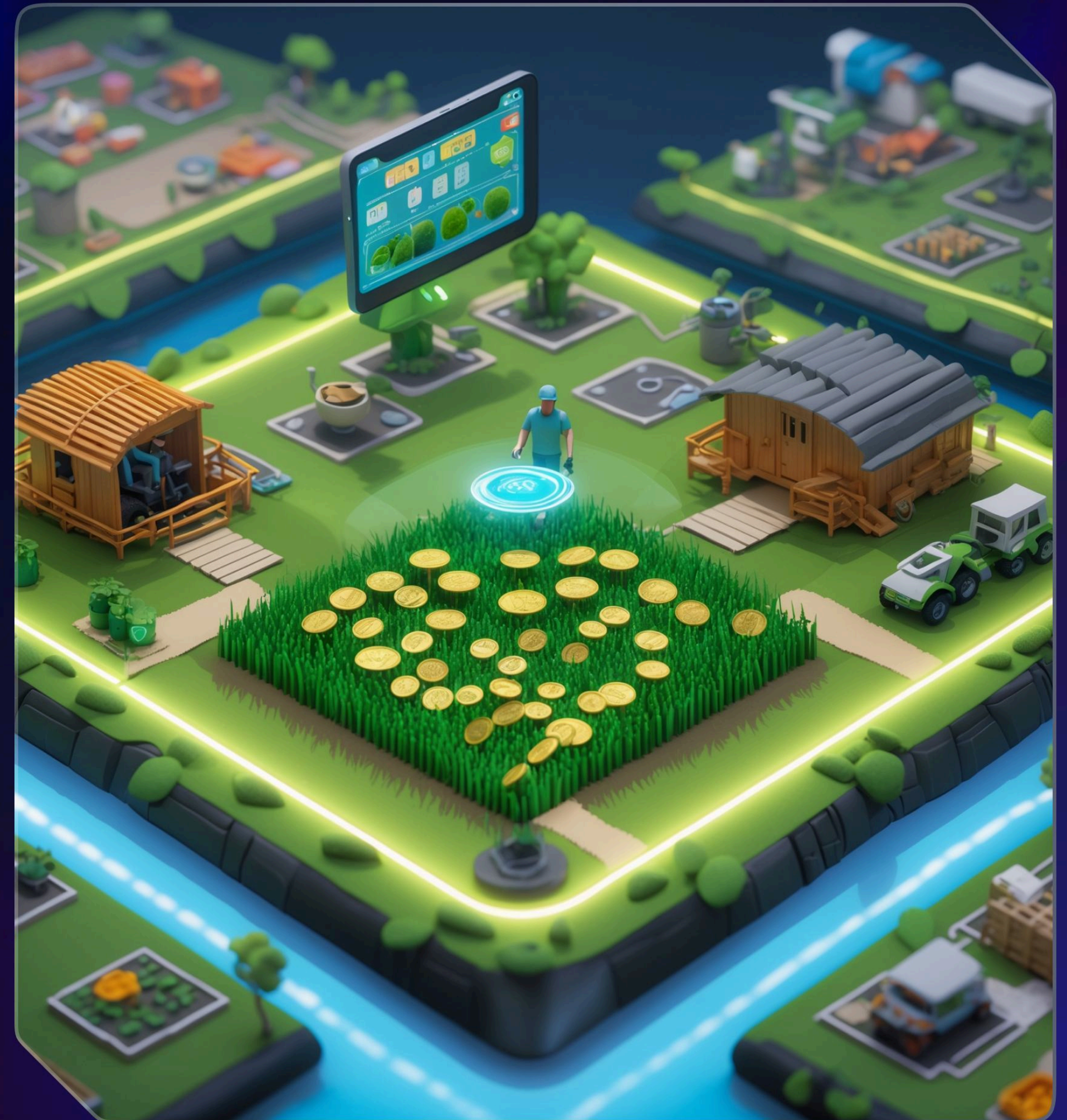
Farming

Grow Or Develop Assets On Your Land (Houses, Crops, Animals, & Assets).



Staged Land Release

Land Is Sold In Phases, Increasing In Price As Demand Grows.



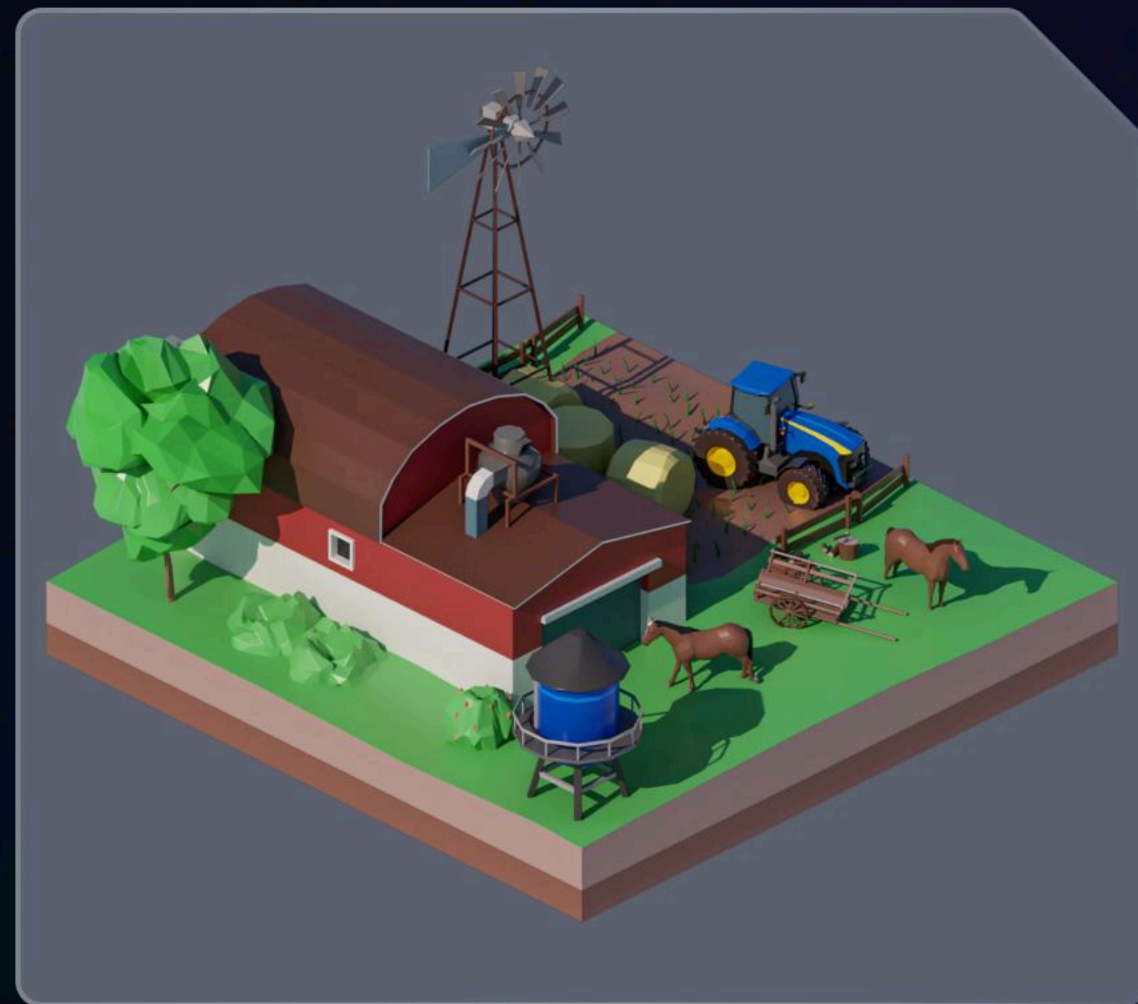
Benefits Of Faith Farming



Faith Farming Only Have **9,990 Exclusive** Virtual Land Parcels With Immense Price Growth Potential. Users Can Trade, Farm, Create Assets, And Engage In Blockchain-Powered Activities Like NFT & ANFT Creation And Cloud Mining.

Benefits of Faith Farming

Step 1



Buy Land

Step 2



Lease Your Lands

Step 3



Cloud farming

Step 4



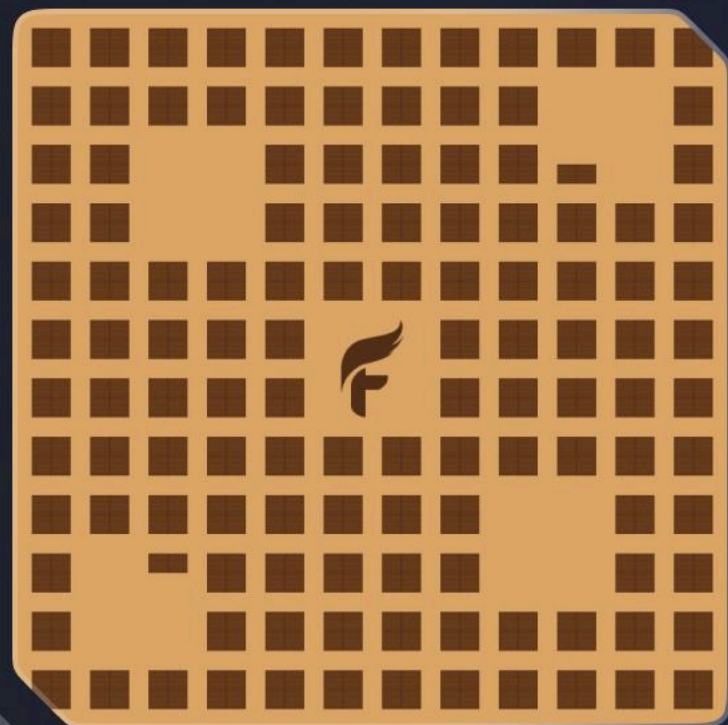
Trade Lands, Create NFTs & ANFTs And Grow Your Assets.

Land Parcel Phases Breakdown



Total Land Supply Only **9990** Parcels.

Price Increases After Every Land Purchase/Sale.



Phase 1 : **500 Lands (Price Growth 200%)**

40% Non-Transferable

• 200 Parcels

Land Price Fix

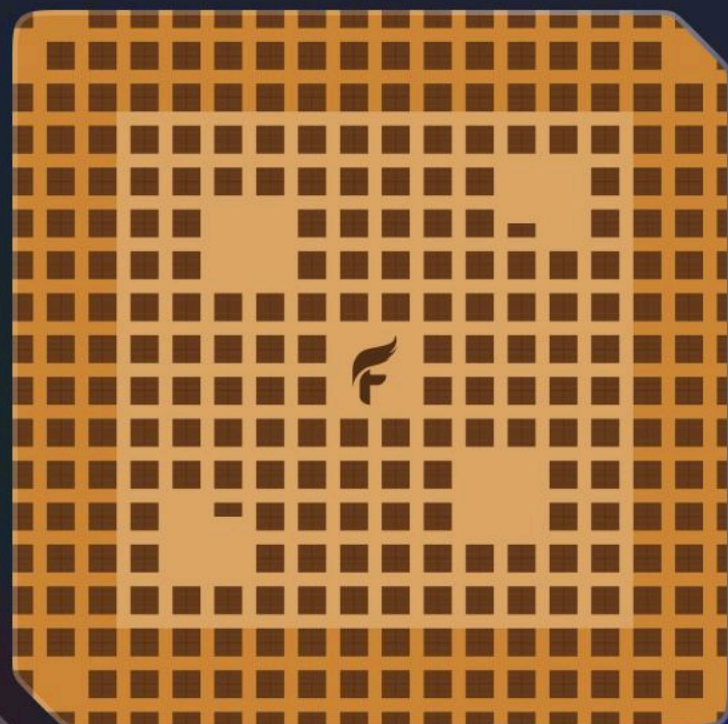
• \$50

60% Transferable

• 300 Parcels

Land Price Fix

• \$100



Phase 2 : **1000 Lands (Price Growth 400%)**

40% Non-Transferable

• 400 Parcels

Land Price Fix

• \$100

60% Transferable

• 600 Parcels

Land Price Fix

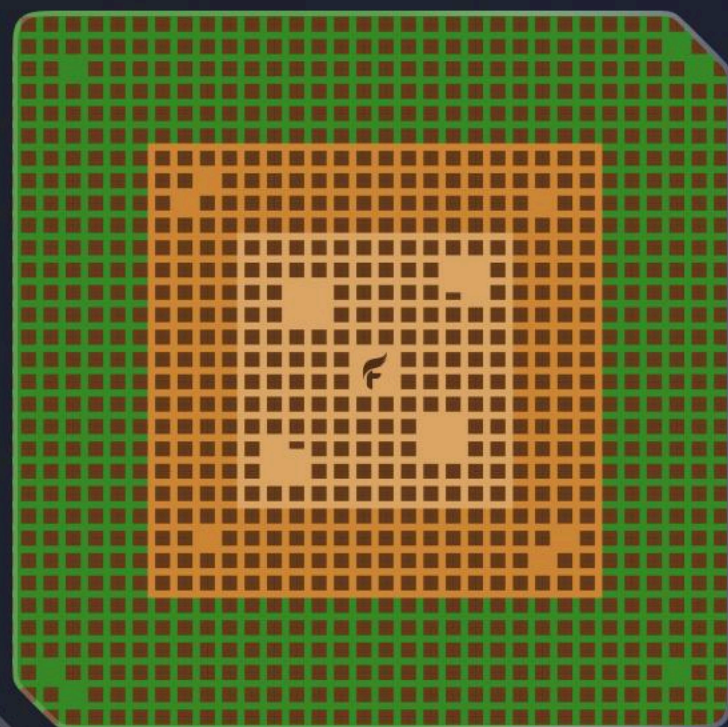
• \$200

Land Parcel Phases Breakdown



Land Trading Is Now Open. Trade Based On Profit.

Price Increases After Every Land Purchase/Sale.



Phase 3 : 3000 (Price Growth: 800%) – Land Trading Begins

40% Non-Transferable

- 1200 Parcels

Land Price

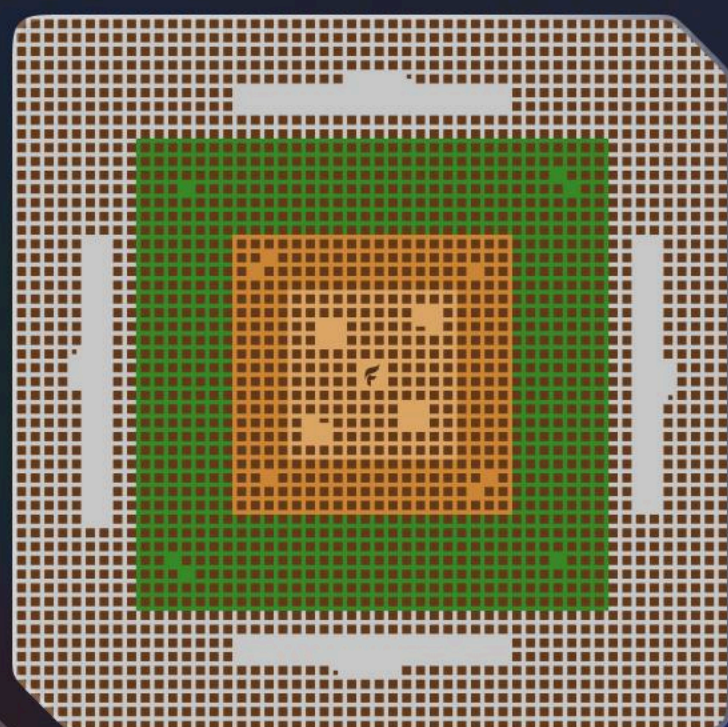
- \$200

60% Transferable

- 1800 Parcels

Land Price

- \$400



Phase 4 : 5490 Lands (Price Growth 1600%)

40% Non-Transferable

- 2196 Parcels

Land Price

- \$400

60% Transferable

- 3294 Parcels

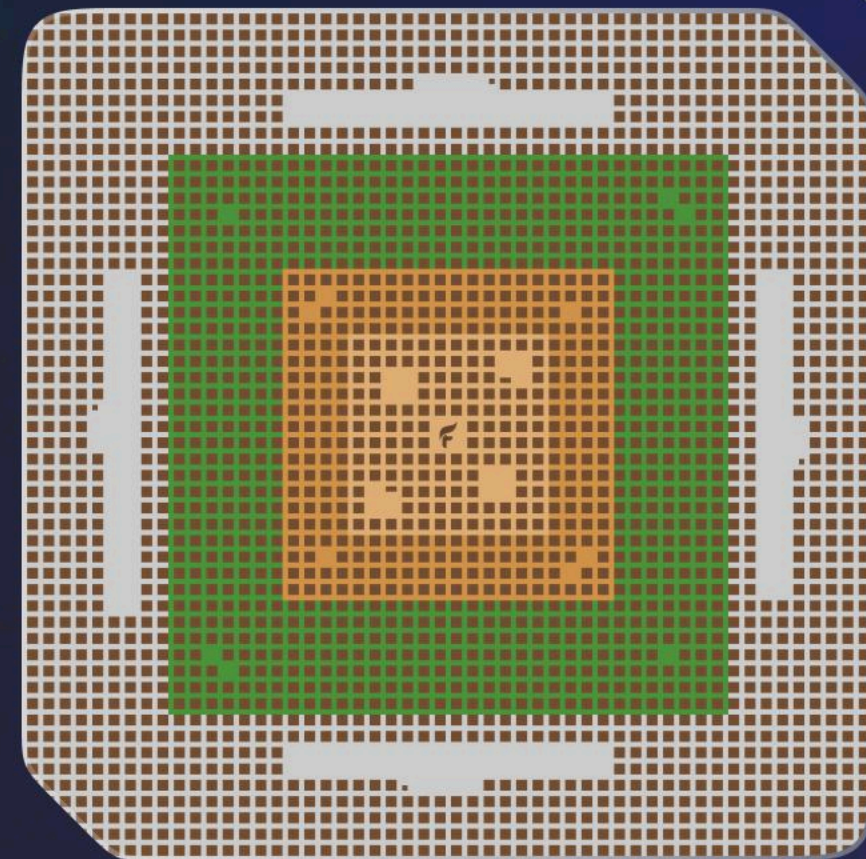
Land Price

- \$800

How To Buy Land In Faith Farming

LAND MAP INTERFACE

- The Land Map Shows Which Parcels Are Available To Buy Based On Their Transferability.



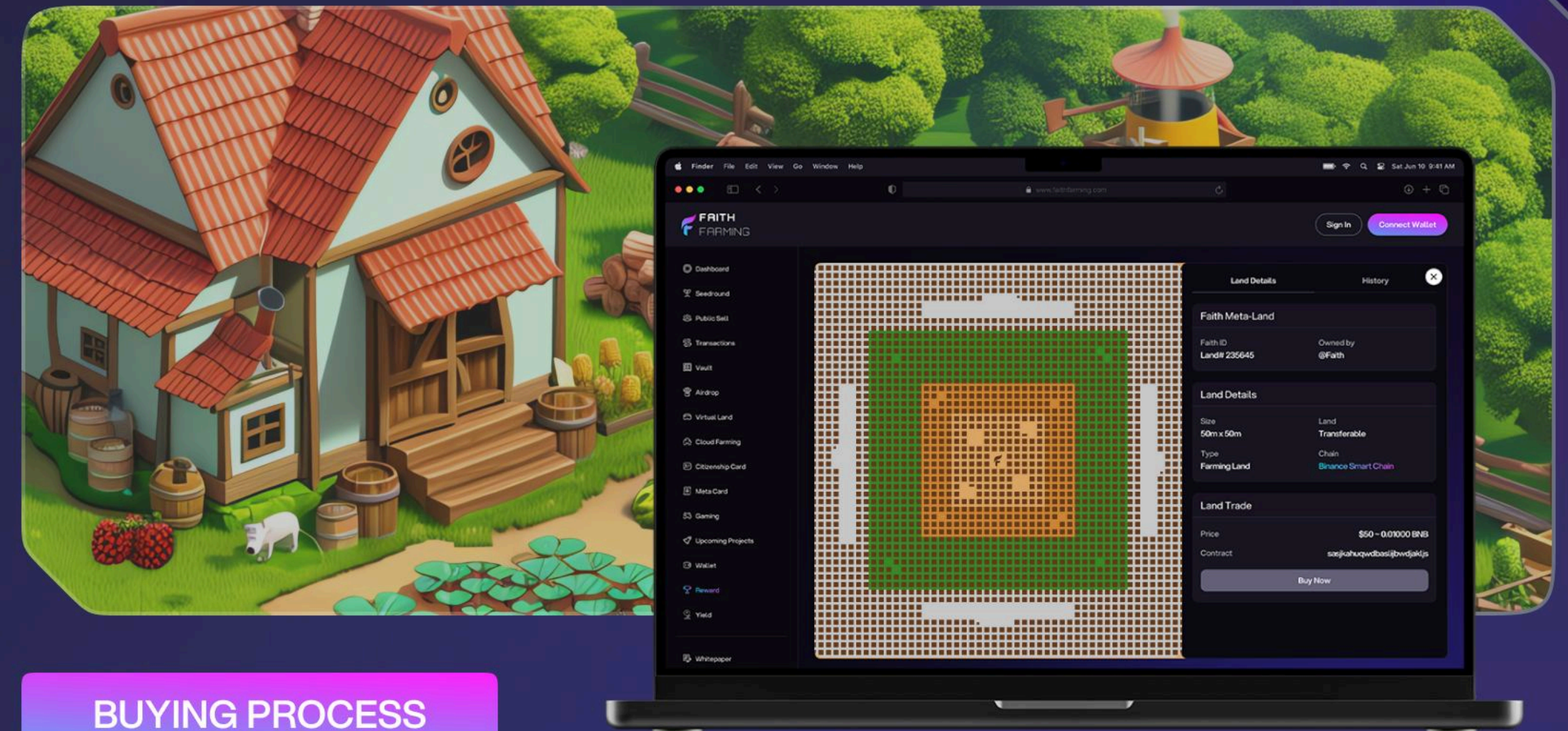
PRICE DYNAMICS

Non-Transferable

- \$50 Per Parcel Initially.

Transferable

- \$100 Per Parcel Initially.



BUYING PROCESS

Step 1

Select Land Type

- Choose Between **Non-Transferable** Or **Transferable**.

Step 3

Choose Currency

- Pay With **USDT, BNB, FAITH, Or USDC**.

Step 2

Enter Your Refer Address

- Enter The Wallet Address Of Your Referral.

Step 4

Execute Transaction

- The Purchase Is Confirmed Via A **Smart Contract**.

Land Tenure & Rental Income

Earn 36% Annual Returns On Land Rent

Rent Your Virtual Land And Generate Monthly Passive Income With A 36% Yearly Return.

How It Works

- Rent Out Land – Secure Ongoing Earnings.
- Receive Monthly Profits – Steady Payouts From Tenure.
- Opportunity For Fix Income In The Faith Farming Land.



Understanding Land Pricing Algorithm

Price Increases Over Time

The Platform's Algorithm Adjusts Land Prices Based On Demand And Activity. For Example

Phase 1

Non-Transferable Land Starts At \$50, And Transferable Land Starts At \$100.

After phase 4

Prices Increase Based On The **Number Of Buyers** And Market Demands.

Feature	Non-Transferable Land	Transferable Land
Starting Price	\$50 Per Parcel	\$100 Per Parcel
Trading Ability	Not Tradable Or Transferable	Can Be Sold Or Traded To Others
Liquidity	Low Liquidity — Land Cannot Be Resold	High Liquidity — Can Be Traded Freely
Long-Term Investment	Ideal For Long-Term Farming Or Asset Building	Ideal For Flipping Or Trading
Ownership	Permanent Ownership (Cannot Be Sold)	Transferable Ownership (Can Sell Or Trade)

The First Referral Count As A Permanent Referral For Every Trade.

9990 Lands = 9990 Refers Only

Earn 10% Profit On The First Land Sale And 5% Profit On Every Trade & Farming Made On Your Referral Land.

The First Land Owner Also Gets A 5% Lifetime Profit On Every Trade Made On The Minted Land.

Type Of Earning	Permanent Referral	First Landowner
Land Sale	10% Of First Land Sale	Price Appriciation
Every Land Trade	5% Lifetime	5% Lifetime
Every Farming	5% Lifetime	5% Lifetime
Rent On Land	5% Lifetime	5% Lifetime



The Core Components Of Faith Farming

Mint Land - Sell Profit

✦ Digital Ownership

Your Land Is Secured On The Blockchain, Ensuring Transparency.

✦ Value Appreciation

As Demand Grows, Land Prices Increase, Benefiting Investors.



Token - Growth Profit

✦ Faith Token Total Supply 36936969

✦ Soul Bound Token

Who Mints The Land Hold The Soul Bound Token Permanently To Their Address. And It's Your Special Identity.

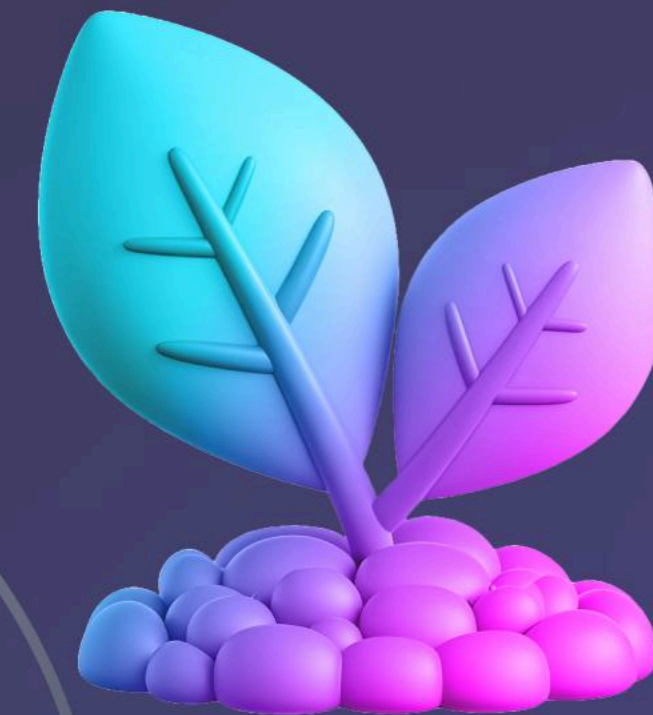
✦ Currency Options

USDT, BNB, And FAITH Token Can Be Used To Buy Land And Assets.



Land Rent - Monthly Profit

Rent Your Land & Get Monthly Returns.



Seed Farming - Daily Profit

✦ Diverse Crops

Choose From Multiple Seeds To Cultivate Different Digital Crops.

✦ Growth Opportunities

Certain Seeds May Provide Higher Rewards Based On Farming Strategy.



Assets & Animal - Trade Profit

✦ Livestock Animals

Can Add Animals & It Contribute To Farm Growth And Additional Rewards.

✦ Custom Development

Build Structure Like Houses, Animals, Assets, Machineries And Tools.

Maximize Your Land's Potential

Land Tenure

- Earn 36% Annual Returns Through Land Tenure, Ensuring Steady Passive Income And Long-Term Growth.



Farming Profits

- Increase Profits By Expanding Farming And Seeding Activities While Holding Your Land For Greater Value Appreciation.



Stay Engaged With Updates

- Keep Track Of Platform Updates To Stay Ahead Of New Features Like **Seed Farming, Upgrades, And Land Trading.**



Monitor Land Value

- Regularly Check Your Land's Value, As **Prices Fluctuate** Based On The Algorithm And Demand.



Post-Purchase Actions



Once You Have Purchased Your Land, The Real Farming Begins:

✦ Trade



In The First Four Phases, Land Prices Follow A Structured Growth Model: Phase 1 (**200%**), Phase 2 (**400%**), Phase 3 (**800%**), And Phase 4 (**1600%**). After The First Four Phases, Land Prices Will Be Determined By Market Demand And Trade Activity.

✦ Rent



Renting Virtual Land Generates Monthly Income Of **36% Annual Returns**, Boosts Utility, And Increases Value Over Time. As Demand Grows, Rental Returns Rise, Ensuring Steady Profits While Maintaining Ownership.

Post-Purchase Actions



Once You Have Purchased Your Land, The Real Farming Begins:

✦ Seed Mechanic



The Seed Option Is Hidden Initially, But Once Unlocked, It Allows You To Plant Seeds For Further Growth.

These Might Lead To Valuable Upgrades Or Generate New Assets.

✦ Upgrade System



Build Houses And Structures On Your Land, Enhance Its Value With Virtual Trees And Assets, And Lock Features Like Animals (Cows, Horses) And Vehicles (Tractors, Cars) For Future Upgrades.

Get Daily profit in Seed farming



Choose Your Seeds From Four Seed Investment Options, Each Offering Increasing Returns Over Time:

Bit Seed



**GOOD RETURN -TIMELINE
3-MONTHS**

Byte Seed



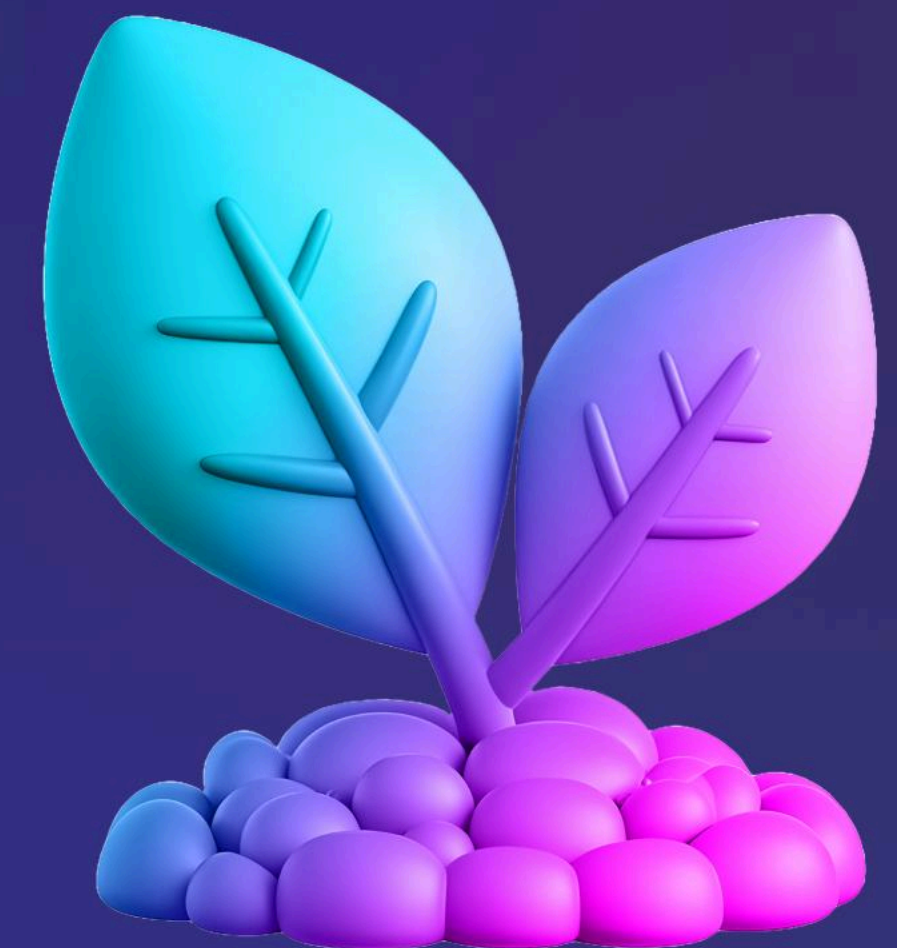
**HIGH RETURN - TIMELINE
6-MONTHS**

Block Seed



**HIGHER RETURN - TIMELINE
12-MONTHS**

Hybrid Seed



**HIGHEST RETURN -
TIMELINE 24-MONTHS**

GET TRADE PROFIT ON EVERY MINUTE IN FAITH NFT & ANFT



Faith Farming Offers A Limited Supply Of NFTs And ANFTs For Animals And Assets, Providing Multiple Ways To Earn And Grow Within The Ecosystem For Both Landowners And Non-Landowners.



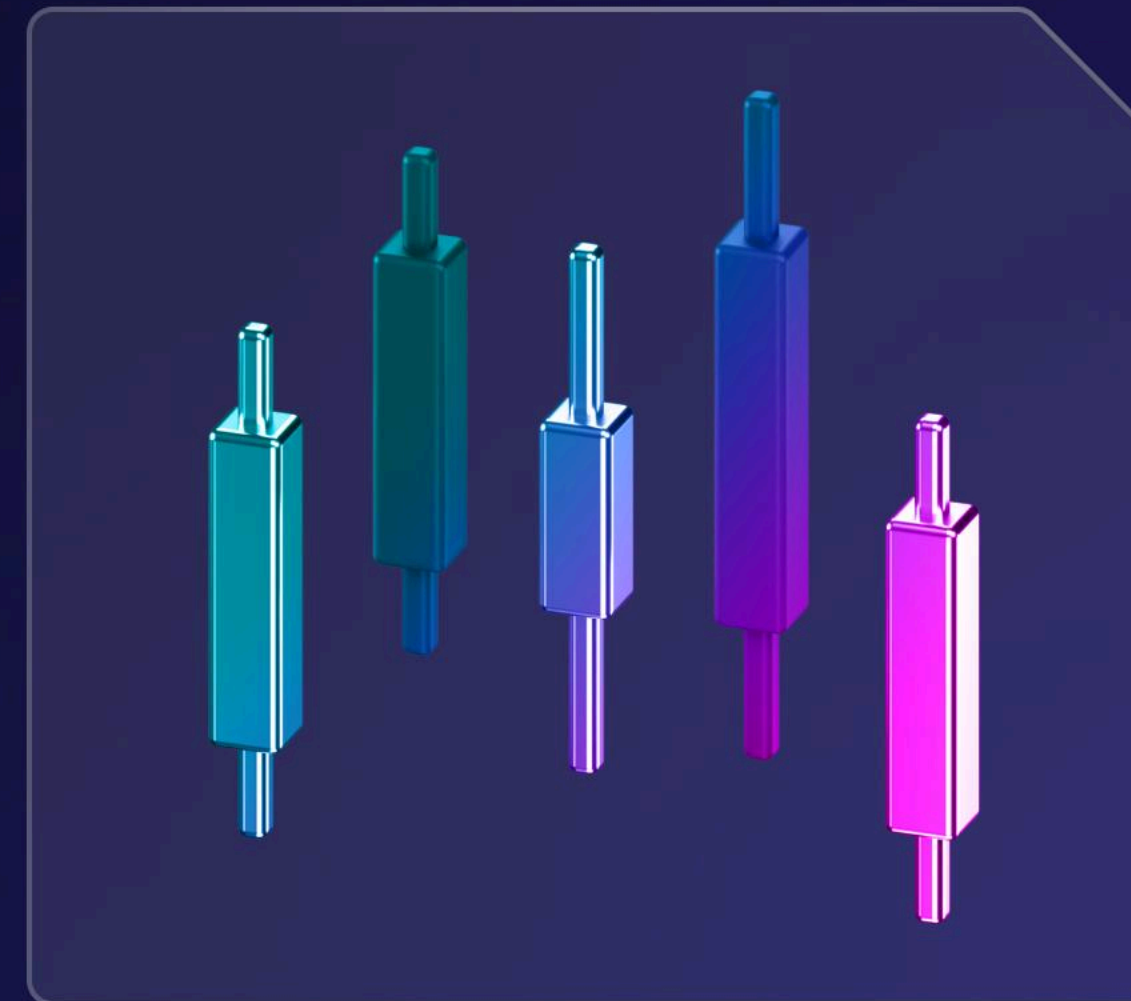
Mint

Create Unique NFTs & ANFTs For Digital Assets.



Stake

Earn Rewards By Staking NFTs & ANFTs Without Owning Land.



Trade

Buy NFTs & ANFTs At A Lower Price And Sell Them Later For A Profit.



Future Use

Hold NFTs & ANFTs Now And Utilize Them When Acquiring Land Later.

Faith Marketplace Enables Users To Mint, Stake, Trade, And Maximize Their Digital Assets, Ensuring Long-Term Value Appreciation.

Conclusion And Final Thoughts

Faith Farming

Presents A Unique Opportunity For Virtual Land Ownership, Farming, And Trading In An Evolving Decentralized Ecosystem.

By Purchasing Land Early, Growing Assets, And Staying Engaged With The Community, You Can Maximise Your Investment Over Time.

The Platform's Evolving Features Make It An Exciting And Rewarding Experience For All Types Of Investors.





Thank You

Be A Part Of The New Metaverse Earning
Revolution With Faith Farming.

www.faithfarming.com

www.faithprotocol.io

www.faithprotocol.com

www.faithmeta.land

